

eyes  
and  
ears of

"SPECIAL EDITION"

Walt  Disney World®

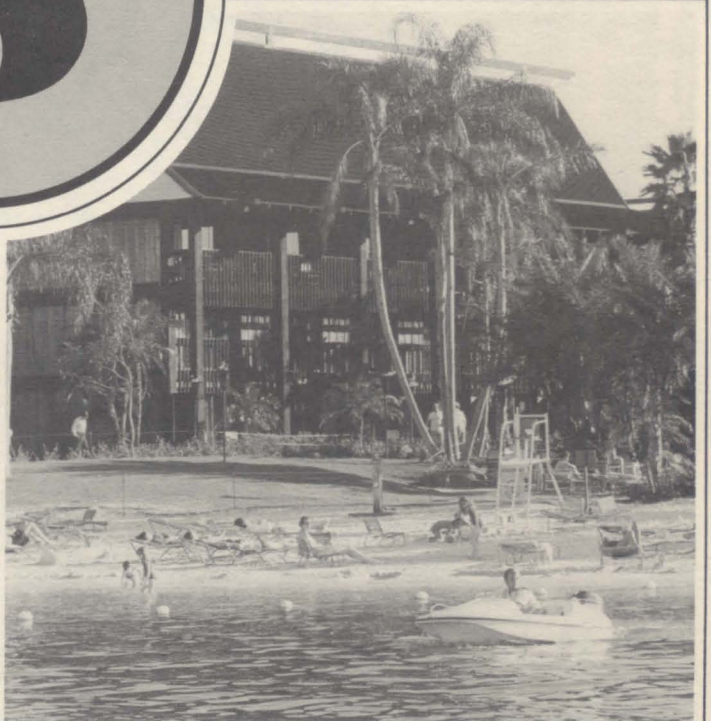
VOL. 6, NO. 40B

PREPARED BY AND FOR THE EMPLOYEES OF WALT DISNEY WORLD

OCTOBER 1, 1976



5





Yes, we've made our mark in history! Since we opened our doors to the World on October 1, 1971, many pages have been filled in the Walt Disney World scrapbook. As we celebrate this five-year milestone, let's thumb back through our scrapbook and reminisce a bit . . .



First (and, of course, the most important!) came the employees! After hours of standing in line at the old Employment Center trailers on 535, over 6,500 employees were hired as our opening cast! That was well over the original estimate of 4,000 employees . . . but only half of what we have today! You've come a long way, Mickey!

In October, 1971, we held our official dedication of Walt Disney World. Roy O. Disney hosted the formal dedication ceremony . . . Arthur Fiedler conducted the World Symphony at Cinderella Castle . . . dozens of celebrities attended the event . . . and a 1,076-piece marching band filled Main Street . . . all this marking the first of many entertainment spectaculars to take place at the Vacation Kingdom of the World!!







And then came our guests . . . over 50 million of them from around the nation and around the world!!

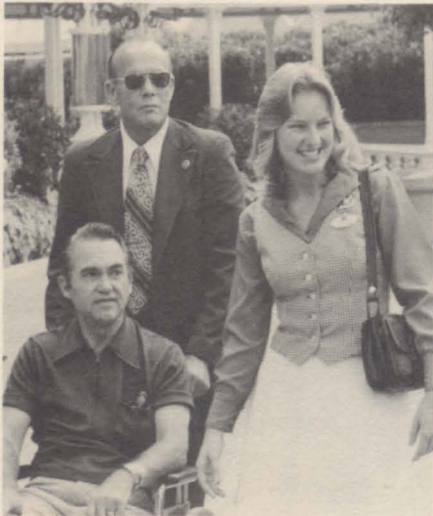


. . . there were special events and celebrations

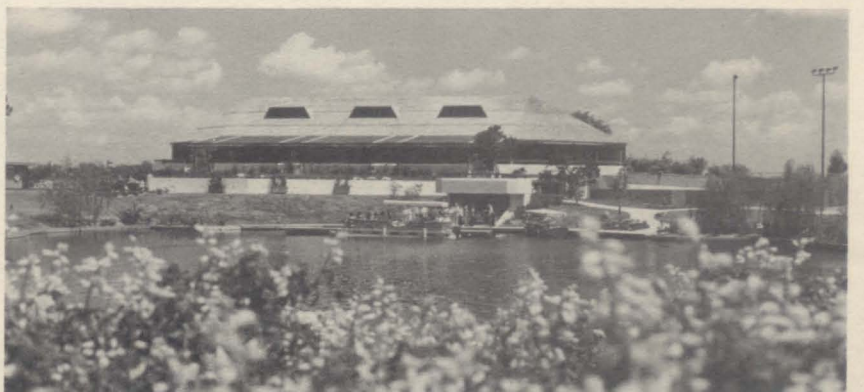




... "and let us make it perfectly clear" that famous (and infamous) people have visited Walt Disney World!



... we continued to build and grow ...







we've made a few changes . . .



and through it all, we've all had time for some fun!



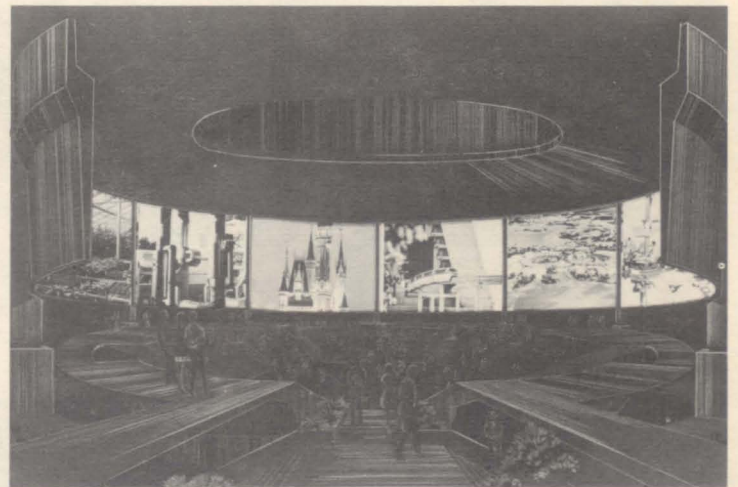




but this is just the beginning, Walt Disney World is still "on the grow"!



WORLD SHOWCASE

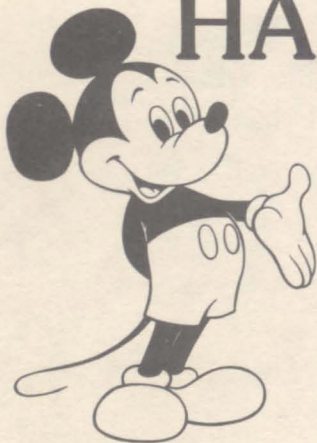


EPCOT



LAKE BUENA VISTA

# HAPPY BIRTHDAY TO US!!



eyes and ears of **Walt Disney World**

A newspaper for employees of Walt Disney World and related companies. All rights reserved. Reprint of material only upon written approval of the Disney University at Walt Disney World. Address correspondences to:

The Editor:  
**EYES & EARS**  
 Walt Disney World  
 P.O. Box 40  
 Lake Buena Vista, Florida 32830  
 © 1976 Walt Disney Productions

**Contributors:**  
 Editor: Beth Black  
 Typescript: Kim Pannier  
 Graphics: Judy Shumaker  
 Walt Disney World Photography Department  
 Walt Disney World Print Shop

**This document has been brought to you by  
The Progress City Public Library Disneyana Collection**

<https://archive.org/details/@progresscityusa>



**A Project of Progress City, U.S.A.**

<https://progresscityusa.com>

**Historians and Authors please cite "The Progress City Public Library Disneyana Collection" when referencing this item. Thank you!**

**To support the Progress City Public Library's efforts, please visit our Patreon:**

<https://www.patreon.com/progresscityusa>